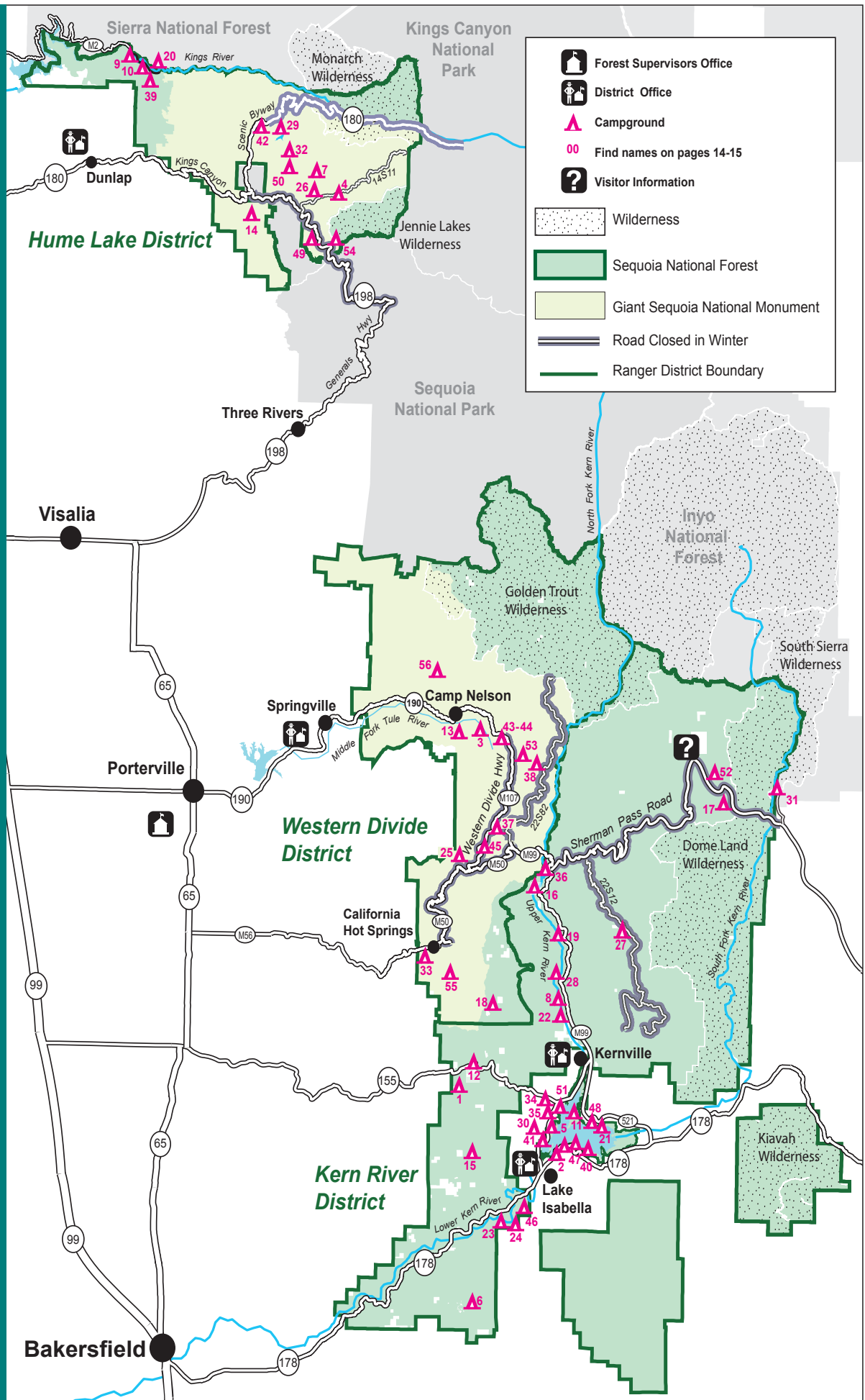


RECREATION MAP OF SEQUOIA NATIONAL FOREST AND GIANT SEQUOIA NATIONAL MONUMENT

Campground
details and
map key on
pages 2-3



Campgrounds

USE THIS MAP KEY WITH MAP ON PAGE 1 OF THIS DOCUMENT
RESERVE YOUR CAMPSITE ONLINE AT RECREATION.GOV

No.	Camp-ground	Elevation	Total Sites	Max. Length	Rest-rooms	Access-ibility	District	Remarks
1	Alder Creek	3,900	13	20'	V	C	KR	no drinking water
2	Auxiliary Dam	2,650		no limit	F,V	B	KR	open camping, fee required
3	Belknap	5,000	15		V	C	WD	no trailers, sites within giant sequoia grove, fee required
4	Big Meadows	7,600	45		V	C	HL	public phone 3/4 mile, compacted dirt surfaces, no drinking water
5	Boulder Gulch	2,650	78	45'	F	C	KR	fish cleaning station, playground, fee required
6	Breckenridge	6,600	8		V	C	KR	unsuitable for trailers, no drinking water
7	Buck Rock	7,600	9		V	B	HL	public phone 1 mile, no drinking water
8	Camp 3	2,800	52	30'	V	C	KR	fee required
9	Camp 4	1,000	5		V	C	HL	unsuitable for trailers, no drinking water
10	Camp 4½	1,000	0		N/A	C	HL	campground closed, single cabin rental by reservation only
11	Camp 9	2,600	109	no limit	F,V	C	KR	fee required
12	Cedar Creek	4,800	11		V	B	KR	unsuitable for trailers, drinking water May-October
13	Coy Flat	5,000	20	24'	V	C	WD	fee required
14	Eshom	4,800	24		V	C	HL	single and multi-family group sites, fee required
15	Evans Flat	6,100	20	20'	V	C	KR	fenced pasture, 4 equestrian sites, no drinking water
16	Fairview	3,500	55	45'	V	A	KR	3 campsites accessible, single and multi-family group sites, fee required
17	Fish Creek	7,400	40	27'	V	C	KR	water as weather permits, OHV trails, fee required
18	Frog Meadow	7,500	10	16'	V	C	WD	no drinking water
19	Goldledge	3,200	37	30'	V	C	KR	fee required
20	Green Cabin Flat	1,000			V	B	HL	no drinking water
21	Hanning Flat	2,650		no limit	V	C	KR	open parking, chemical toilet, no drinking water
22	Headquarters	2,800	44	27'	V	A	KR	one accessible campsite, fee required
23	Hobo	2,300	25	22'	V	B	KR	unsuitable for trailers, ramp to accessible site 8% grade, fee required
24	Hobo Overflow	2,300	10	22'	V	B	KR	fee required
25	Holey Meadow	6,400	10		V	C	WD	no trailers, reservable, fee required, near Trail of 100 Giants
26	Horse Camp	7,600	5		V	B	HL	compacted dirt surfaces, metal pole corrals, no drinking water
27	Horse Meadow	7,600	41	22'	V	C	KR	walk-in sites, water as weather permits, fee required
28	Hospital Flat	3,000	40	30'	V	C	KR	fee required
29	Hume Lake	5,200	74		F	C	HL	public phone, groceries, gas 1 mile, fee required
30	Hungry Gulch	2,700	78	30'	F	C	KR	fee required
31	Kennedy Meadows	5,800	38	30'	V	C	KR	water as weather permits, 3 sites for any size RV, fee required

Campgrounds

USE THIS KEY WITH MAP ON PAGE 1 OF THIS DOCUMENT
RESERVE YOUR CAMPSITE ONLINE AT RECREATION.GOV

No.	Camp-ground	Elevation	Total Sites	Max. Length	Rest-rooms	Access-ibility	District	Remarks
32	Landslide	5,800	9		V	C	HL	compacted dirt surfaces, fee required
33	Leavis Flat	3,000	9	16'	V	C	WD	fee required
34	Live Oak North	2,700	60	30'	F	C	KR	open holiday weekends, fee required
35	Live Oak South	2,700	90	30'	F	C	KR	open holiday weekends, fee required
36	Limestone	3,800	22	30'	V	C	KR	no drinking water, fee required
37	Long Meadow Group Camp	6,400	1 (36)		V	C	WD	remote, near Trail of 100 Giants fee required
38	Lower Peppermint	5,300	17	16'	V	C	WD	fee required
39	Mill Flat	1,100	5		V	B	HL	unsuitable for trailers, no drinking water
40	Paradise Cove	2,600	138		F,V	C	KR	58 family units, 80 RV sites, fish cleaning station, fee required
41	Pioneer Point	2,650	78	30'	F	C	KR	fish cleaning station, playground, fee required
42	Princess	5,900	88		V	A	HL	multi-family group sites, dump station, fee required
43	Quaking Aspen	7,000	32	24'	V	A	WD	two accessible campsites, fee required
44	Quaking Aspen Group Camp	7,000	3	??	V	A	WD	fee required
45	Redwood Meadow	6,100	15	16'	V	B	WD	adjacent to giant sequoia grove, fee required
46	Sandy Flat	2,300	35		V	A	KR	includes 6 walk-in sites, 2 accessible, easy access, fee required
47	South Fork Recreation Area	2,650		no limit	F,V	C	KR	dispersed camping, open parking, fee required
48	Stine Cove	2,650		no limit	V	C	KR	open parking, no drinking water
49	Stony Creek	6,400	49		F	C	HL	public phone, groceries 1/2 mile, fee required
50	Ten Mile	5,800	13		V	C	HL	compacted dirt surfaces, no drinking water, fee required
51	Tillie Creek	2,650	159	30'	F	A	KR	fish cleaning station, playground, fee required
52	Troy Meadow	7,800	73	20'	V	C	KR	water as weather permits, OHV trails, fee required
53	Upper Peppermint	7,100	—		V	C	WD	no drinking water, dispersed camping, fee required
54	Upper Stony Creek	6,400	19		V	B	HL	compacted dirt surfaces, public phone, groceries 1/2 mile, fee required
55	White River	4,000	12	16'	V	C	WD	fee required
56	Wishon	3,900	35	24'	V	C	WD	4 double family units, public phone at entrance, fee required

Campground Table Key

Restrooms:	F = Flush	V = Vault	
Accessibility:	A = Most	B = Moderate	C = Least
District:	HL = Hume Lake	WD = Western Divide	KR = Kern River



www.fs.usda.gov/sequoia

**SEQUOIA NATIONAL FOREST
SUPERVISOR'S OFFICE**

1839 South Newcomb
Porterville, CA 93257
559-784-1500

**HUME LAKE RANGER
DISTRICT**

35860 East Kings Canyon Road
(Hwy. 180)
Dunlap, CA 93621
559-338-2251

**WESTERN DIVIDE RANGER
DISTRICT**

32588 Highway 190
Springville, CA 93265
559-539-2607

**KERN RIVER RANGER
DISTRICT —
Kernville Office**

11380 Kernville Road
Kernville, CA 93238
760-376-3781

Lake Isabella Visitor Center

7158 Lake Isabella Blvd.
P.O. Box 3810
Lake Isabella, CA 93240
760-379-5646



Produced in cooperation with the
USDA Forest Service, which is an
equal opportunity service provider
and employer.

Handy Numbers and Web Sites

Inyo National Forest
351 Pacu Lane Suite 200
Bishop, CA 93514
Phone 760-873-2400
www.fs.usda.gov/inyo

CA Department of Fish and
Wildlife
1416 9th Street
Sacramento, CA 95814
Phone 916-445-0411
www.dfg.ca.gov

Sequoia and Kings Canyon
National Parks
47050 Generals Highway
Three Rivers, CA 93271-9700
For 24-hour park information,
call 559-565-3341; 559-565-3766
(wilderness permit reservations)
www.nps.gov/seki

BLM Ridgecrest Resource
Area
300 South Richmond Road
Ridgecrest, CA 93555
Phone 760-384-5400
[www.blm.gov/ca/st/en/fo/
ridgecrest.htm](http://www.blm.gov/ca/st/en/fo/ridgecrest.htm)

Published by the Three Forests Interpretive Association, a non-profit educational organization in partnership with the Sequoia, Sierra, and Stanislaus National Forests. The Association publishes and distributes books, brochures, maps, and other materials relating to the human and natural history of the Sierra Nevada, offering them for sale at our forest offices. Profits from the sale of these items help fund a wide range of interpretive programs and the Sequoia Visitor Guide. 3FIA website: <http://www.3forests.com>



We appreciate the support of our sponsors.



gsnma.org



A Division of
CALIFORNIA LAND MANAGEMENT

clm-services.com